



Cherry Island Disc Golf Course

**Cherry Island Sports Park 2429
U St, Sacramento, CA 95673**

Greetings,

El Dorado Disc Sports Foundation was born from a passion for growing the sport of disc (Frisbee™) golf and for educating the public about the physical, mental, and social benefits that a disc golf course brings to a community. In 2016 we teamed with a fantastic group of all volunteers to install the first Folsom, CA. A 9-hole disc golf course that has become a focal point of the community for low-cost outdoor family fun.

Shortly after that, in the Spring of 2018, we established a 9-hole youth course at a local middle school, Camerado Springs Middle School in Cameron Park, CA. The students took part in the development and course installation creating pride of ownership. The students now have disc golf as a part of their Life Fitness curriculum and hold disc golf fundraising tournaments.

In March 2020 the 18 hole course located in Cameron Park Lake, Cameron Park, CA opened for the community. The Course has become a staple of recreation for families, youth, social groups, and local residents.

We believe everyone should have access to a quality course and be able to enjoy all the physical and mental health benefits that disc golf has to offer. We chose to offer our time, talents, energy, and passion by helping disc golf clubs, schools, and communities grow the sport of disc golf. El Dorado Disc Sports Foundation forms partnerships with local area disc golf supporters and businesses to realize this goal. We would be proud to partner with the County of Sacramento to provide a low cost amenity in the community.

The Cherry Island disc golf course will be installed in partnership with the local community and volunteers. Thank you for taking the time to review our proposal and taking an interest in working to make disc golf available to your community.

Respectfully,
Sharon Keoppel
President/Founder



Proposed Disc Golf Course

Red: Phase 1 - 27 Hole Disc Golf Course

Yellow: Parking Area

Orange: Phase 2 - Children's/Youth Course



Disc Golf Benefits

Economical

- Low cost of construction, maintenance, and play.
- Attracts players to the local community.
- Potential revenue generator from gate fees, tournaments, disc equipment sales, lodging.

Community Health

- Provides a low impact and safe means of exercise for all age groups and genders
- Perfect for childhood obesity programs
- Encourages strategic play to negotiate the course, which aids in reduction of mental fatigue
- Offers both upper and lower body conditioning
- Draws people back to a natural setting

Low Environmental Impact

- An excellent way to utilize property without having to develop it.
- Aesthetically enhances the park, while keeping the natural beauty.
- Can occupy under-utilized portions of the property without massive clear cutting.
- Leaves nominal environmental footprint.

Safety

- Serves as a deterrent to crime and vandalism by increasing foot traffic in under-utilized areas.
- A Non-contact activity that promotes friendly competition.

Education

- Schools may introduce the course into their curricula for physical fitness, ecology, planning, physics, and others.
- 42% of current players are college graduates.

Community Involvement

- Formal and informal leagues and tournaments bring community members together.
- Families and friends can share time.

Installation

- Course design can be implemented in phases to accommodate the needs of the park and patron.

Disc Golf -vs- Alternatives



Basketball Court

Cost for one full court: \$18,000 to \$30,000 Number of players: 10 to 20 at a time

- Requires clearing and leveling of land
- Once installed, cannot be easily altered



Tennis and Pickleball Courts

Cost for one full court: \$28,000 to \$80,000

Number of players: up to 4 at a time

- Requires clearing and leveling of land
- Once installed, cannot be easily altered



Playground

Cost for one playground facility: \$35,000 to \$160,000

Number of players: 30 to 50 at a time

- Requires clearing and leveling of land
- Little to no potential revenue beyond gate fees
- Once installed, cannot be easily altered



Disc Golf Course

Cost for one 18-hole course: \$15,000 to \$40,000

Number of players: up to 90 at a time

- Does not require massive clear-cutting or leveling of land
- Low environmental impact
- Can be easily altered to create a variety of play options
- Potential to recover and exceed the cost of installation with disc equipment sales and entry fees from increased park traffic.

Who is Playing Disc Golf?



Disc golf is a game that can quickly be embraced by a large and diverse pool of participants. Young players are taking up the game as courses show up in their neighborhoods. College students are embracing disc golf as a low-cost source of social interaction. Families are not only playing locally but are discovering great appeal in taking disc golf vacations to beautiful course locations. Since it takes very little financial commitment and the learning curve is so quick, disc golf has very few limitations to its growth and public appeal; new players are flooding to courses as quickly as they are created.

One of the significant advantages of disc golf is that it can be played by everyone from young children to senior citizens. To play disc golf you don't need to be athletic, you don't have to be wealthy, you don't need to compile a team, and you don't need large blocks of free time.

According to the 2023 state of disc golf survey (a voluntary online survey that was not likely to be completed by youth or older people who aren't involved with social media), disc golfers can be found in all ages. There is a significant number of players in every age bracket. While most players surveyed are between 22-50, disc golf is also a great retirement activity with people playing into their seventies.

To excel in disc golf, you don't have to be the biggest, strongest or fastest. Anyone willing to learn proper technique and put in the effort to practice can be good at this sport. Paige Pierce is one of the top-rated disc golfers in the world, and at just 5'4" she can drive a disc more than 500 feet.



Like golf, so much of the competition in disc golf is mental. Participants are often just trying to beat their previous scores, be competitive together and still have a good time, and more casual players can all play a round together and still have a good time. Unlike in other sports, you don't need to find disc golfers of a similar skill level to improve yourself or to have fun. It doesn't matter what shape, size, race, religion, marital status, or gender you are in the world of disc golf—this is a sport for everyone.

Why Work with Us?

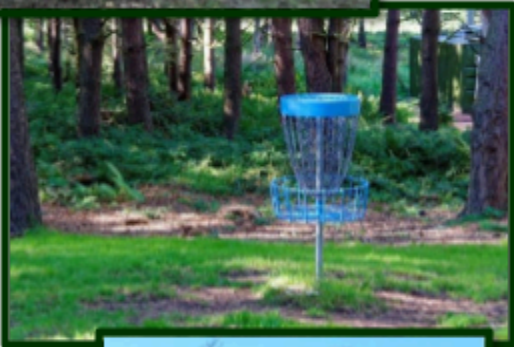
As in standard golf, disc golfers recognize and appreciate a quality course. A well-received course will bring in players from other cities, states and even countries.

A professional disc golf course designer understands how low- or high-tech discs fly coming from the hand of a beginner or a World Champion. They strive to build fun, fair and balanced courses that promote a wide variety of throws and will allow a championship-level player to shine while not intimidating a newbie, which will encourage growth and participation at your venue.

Safety is paramount for players as well as the other patrons in your park and is the number one concern our sport faces with each new course installation. Recognizing the difference between a playing hazard and a potential safety hazard can be tricky. A professional can make these distinctions by applying a broad base of experience to their projects.

A design and install professional anticipate growth potential and allows for possible expansion based on numerous factors including newer and faster discs, and a growing or improving player base. Some of these expansions manifest as extra tee or pin placements for added variety, or even a future set of fairways at the more popular venues.

Give your new course the greatest chance for success by hiring a design and installation professional who is fully invested in getting the most out of your project.



The installation of a disc golf course at Cherry Island would include the construction of tee pads and the installation of signs, benches, and baskets. No new foliage would be required, and very little would be removed. A few branches usually need to be trimmed or removed near a few tees and baskets, especially near eye level range.

Course preparation and path development: The location of tee pads, baskets and the walking routes connecting these would be determined based on team input with the objective to avoid and minimize effects to natural resources and the environment as well as reduce impact with other recreational activities. Some tree branches or brush may need to be trimmed or removed during course design or to establish a safe site. Once the location of paths is determined, they would be created using minimal disturbance and implemented with hand tools. Mulch and other materials will be present to prevent weeds and erosion where necessary. The layout of the course would be designed to avoid increased foot traffic on steep slopes and to establish the course on the relatively level terrain. There will be a network of trails to connect each tee to the targets and to connect each hole from one to the next. As the course gets used, it will create some trampling of the ground vegetation while players track down the discs from each throw. Paths can be diverted if needed to help areas heal from excessive wear. Even target positions and tees can be moved to provide an opportunity for the forest floor to heal if and when it is needed.

Targets: The target is an elevated metal basket that catches the disc. It stands about 4-5 feet high. Each playable hole would have a basket mounted on a pipe that slides inside an anchor pipe that gets cemented into a hole measuring approximately 8" in diameter and 18-24" in depth (technical

specifications for the baskets can be found in Appendix A). The basket pipe and anchor pipe each have collar tabs that line up and are securely locked with a padlock. Each hole would have 1-2 additional anchors installed so that the basket could be moved to different anchor locations periodically to reduce soil compacting and erosion, plus add some variety for players similar to moving holes around on a golf green. Approximately 100 anchor holes would be installed.

Tees: Each hole will have at least one tee pad. The tee pads would be made of dirt with a grass pad measuring approximately 5' x 12' which would be built flush



with the ground. We estimate that a minimum of tees of this size would be required (an installation guide can be found in Appendix B).

Signs: Tee signs and navigational aids are vital to helping first-time users find their way through the course. Each hole would have a tee sign indicating the number, length, recommended flight path, and par. Also, strategically placed navigational aids would be positioned to direct players from hole to hole. The course layout will be intuitive, but a few of these signs will keep all the players on track to play each hole in the right order. Also, a rule's sign and information board should be installed before the first holes at the parking lot. The signs can be constructed with a variety of materials. It would be preferable to build signs with a natural appearance to fit in with the surrounding area. There would also

be good potential to include educational information on the signage about resource protection including (a visual aid can be found in Appendix C)

Benches: Benches would also be strategically deployed to allow players to rest between holes and or wait for other players or park users. Benches can also be constructed with a variety of materials, but again it would be preferable for a more natural appearance.



Cost Estimates

Estimates based on a 27 Hole Disc Golf Course

El Dorado Disc Sports Foundation will cover all associated costs

Targets		
Disc Pole Baskets	$\$450.00 \times 27 = \$12,150$ (shipping \$900.00)	
Locking Collar Assembly:	$\$25.00 \times 54 = \$1,350.00$	
Anchor Assembly:	$\$25.00 \times 54 = \$1,350.00$	
Concrete (Approx. 1 cu.ft. each):	$\$12.00 \times 81 = \972.00	
		\$15,372.00
Tee Pads		
Concrete, artificial turf, rubber mats, etc.	$\$300.00 \times 27 = \$8,100$	
Forms and materials:	$\$200.00 \times 27 = \$5,400$	
		\$13,500.00
Tee Signs		
Sponsor Sign 9"x12"	$\$30.00 \text{ each} = \810.00	
Hole Map 12"x18"	$\$40.00 \text{ each} = \1080.00	
4x4 posts-Market price	$\$16.00/\text{ea.} = \432.00	
Concrete (Approx. 1 cu. Ft each)	$\$12.00 \times 27 = \324.00	
		\$2,646.00
Message Board And Trash Cans		
Message Board (estimated):	$\$500.00$	
Trash Cans (estimated):	$\$30 \times 27 = \810.00	

Benches	\$5,400.00	
		\$6,710.00
<i>Installation Labor Estimates:</i>		
Baskets: 4 hours each (estimated):	4 hrs. x 27 =108 hrs.	
Tee Pads: 8 hours each (estimated):	8 hrs. x 27 =216 hrs.	
Signage: 2 hours each (estimated):	2 hrs. x 27 = 54 hrs.	
<i>378 hrs. x \$20 per hr</i>		<i>\$7,560.00</i>
	TOTAL ESTIMATED COSTS:	\$45,788.00

Safety and Accessibility

The course is intended to be accessible to all, but it will have a natural terrain, and as such, those with mobility challenges may find it difficult to navigate the course. Challenges such as steep inclines, declines, slippery surfaces, and uneven surfaces will be present. Every effort possible will be taken to make the trails as accessible and safe as possible while keeping the construction simple and low impact. Mitigations will be taken to prevent possible injuries to other park users from flying discs. Specific areas will be marked for disc golf, so it doesn't interfere with other park user and players will be warned to watch and yield the right-of-way to other park users. We will include signage to inform park users of the hazards of flying discs at crucial points near the perimeter of the course. Furthermore, the design of the course will consider the potential for flying discs to go astray to prevent the potential for injury to other players on the course. This will include guiding the course play to avoid conflict with other holes and to utilize natural barriers between holes and near tee areas and targets.

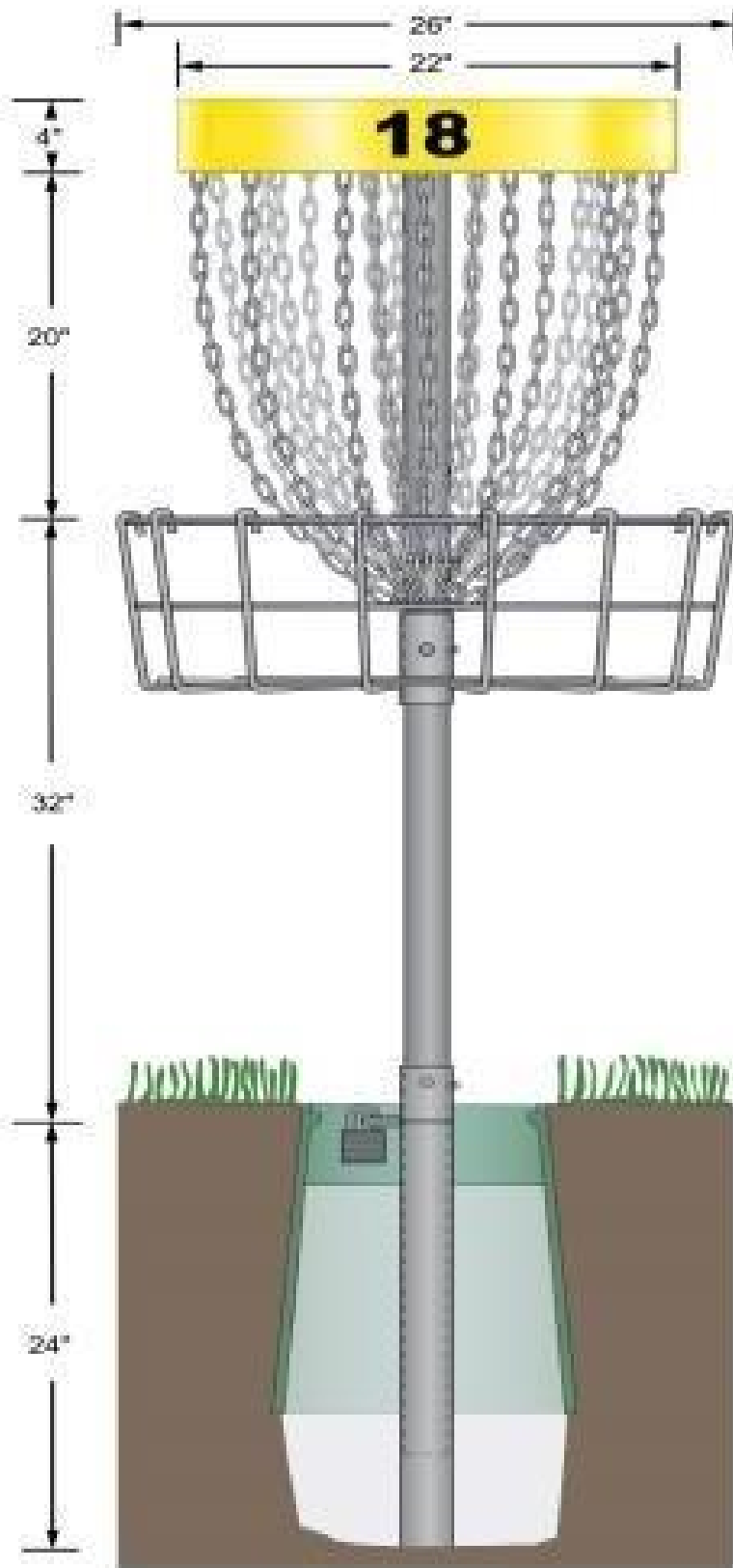
Restroom Facilities

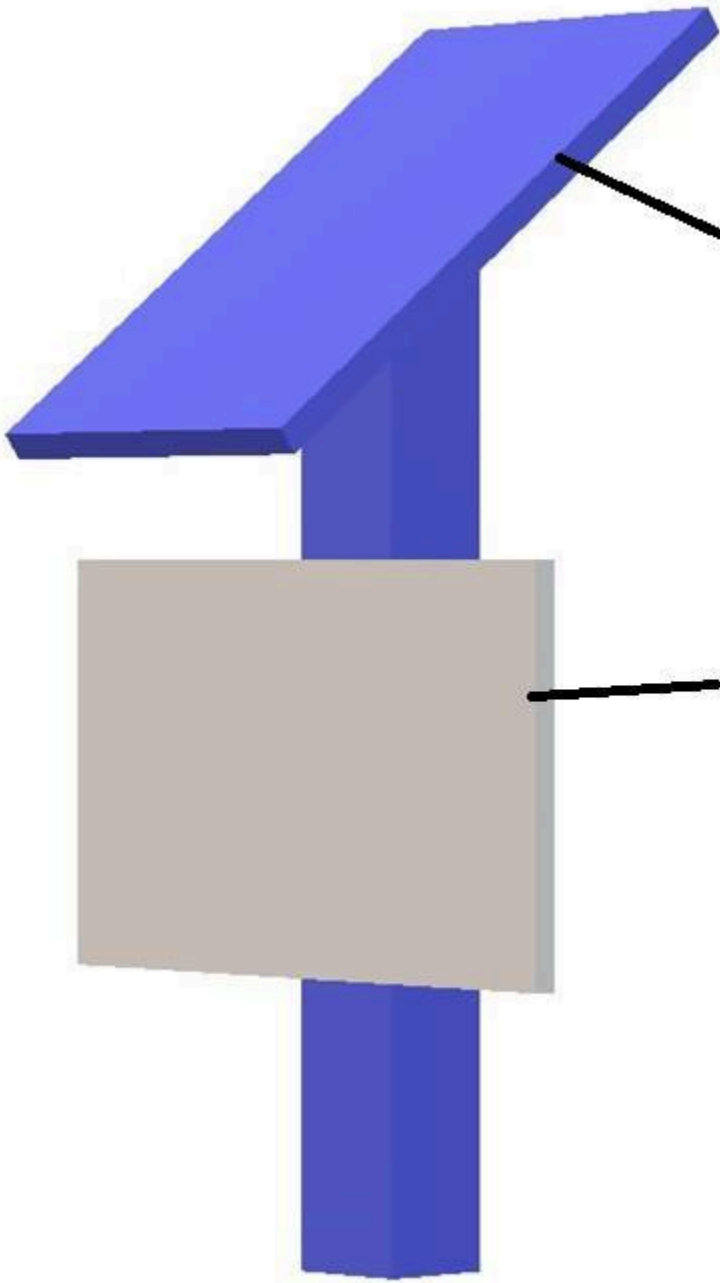
Existing restroom facilities are available. At the course parking lot. Parks will maintain and supply.



Recycling

There will be waste/recycling bins at the Parking Lot. A policy of "take your garbage and recycling with you" through the course will be established, and players will be encouraged to use the bins existing at the park which are near the start of the course.





Tee Sign showing number, length,
recommended flight path and par
12X18

Sponsor sign
9x12

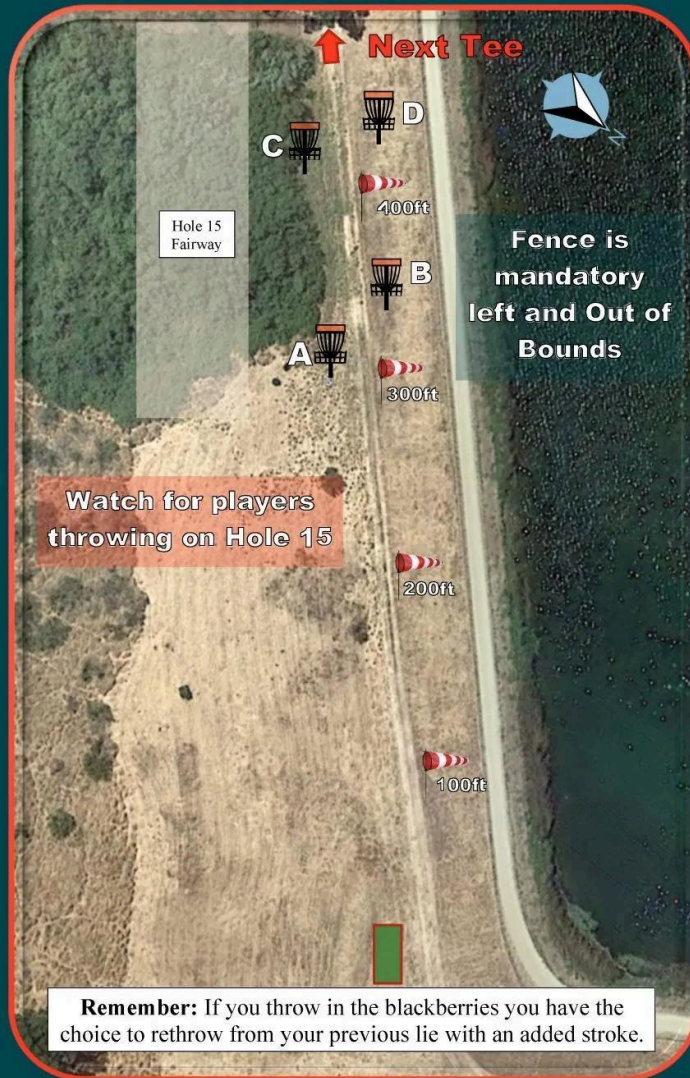
2

CAMERON PARK LAKE DGC

Par 3

- A 330ft/100m**
- B 375ft/114m**
- C 456ft/139m**
- D 466ft/142m**

Scan For
Flyover and
More Hole
Information



Watch for players
throwing on Hole 15

Remember: If you throw in the blackberries you have the choice to rethrow from your previous lie with an added stroke.

Map Prepared By: El Dorado Disc Sports (March 2020)

Founding Sponsor: Your Name or Business Here

